



CRANBOURNE WEST
SECONDARY COLLEGE

YEAR 9 PROGRAM HANDBOOK

STRENGTH THROUGH DIVERSITY

www.cwsc.vic.edu.au

2024

KEY CONTACTS

Sally Ross

Middle Sub-School Assistant Principal
Email: sross@cwsc.vic.edu.au



Brent Stephens

Year 9 Team Leader
Email: bstephens@cwsc.vic.edu.au



Belinda Evans

Careers Leader
Email: bevans@cwsc.vic.edu.au



Cranbourne West Secondary College

Address: 80 Strathlea Drive, Cranbourne West
Phone: (03) 9770 7200
Website: www.cwsc.vic.edu.au
Email: cranbourne.west.sc@education.vic.gov.au

Principal Rob Duncan

CONTENTS

	Page
2024 Victorian School Term Dates	5
Introduction to Year 9	6
Introducing Electives	6
Course of Study Outline – Year 9	7
Time-Line and Selection Process	8
Year 9 Core Subjects	9
English	9
English as an Additional Language	9
Mathematics	10
Physical Education	11
Careers – I Focus	12
Year 9 Electives	13
Summary of Electives and Associated Costs	13
English	15
Behind The News	15
The Writer’s Den	15
Physical Education / Health	16
Country to Coast	16
Girl Power	16
Health Industry	16
Power Up	17
Sports Coaching	17
Sports Science	18
Staying Alive	18
Team Sports	19
Humanities	20
Get Out of Town! – Geography	20
How Did This Happen? – Australian History	20
Law 101	20
New World Business & Entrepreneurship	20
Where Are We Now?	21
WW1 History	21

	Page
Science	22
Body Systems	22
Circuit Breaker	22
Crime Scene Investigations	23
Master Mind	23
Radical Reactions	24
Technology	25
Creative Computing and Game Making	25
Digital and Creative Technologies	25
Eats and Treats	25
Everything Building!	25
Global Grazing	25
Product Design – Wood Technology	26
Robotics	26
STEM	26
The Arts	27
Actor Studio	27
Bandzilla!	27
Dance Evolution	27
Digital Design	28
Experimental Art	28
Photography and Film	29
Language - Japanese	30
Printable Selection Sheet	31

2024 VICTORIAN SCHOOL TERM DATES

Term 1	Term 2	Term 3	Term 4
29 January* until 28 March	15 April until 28 June	15 July until 20 September	7 October until 20 December

* The first day of Term 1 is a student-free day in all government schools to allow for appropriate planning to take place for the arrival of students. As such, students will commence on 30 January 2024.

Each year government schools are provided with four student-free days for professional development, school planning and administration, curriculum development, and student assessment and reporting purposes. The remaining three student-free days are determined by each individual school.

DET Term Dates available from

<http://www.education.vic.gov.au/about/department/Pages/datesterm.aspx>

The College will publish student-free days and important dates after the first School Council Meeting of the year.



INTRODUCTION TO YEAR 9

Cranbourne West Secondary College has adopted an approach to Year 9 where students are provided with an engaging and meaningful curriculum. Research from the Victorian Quality Schooling Project and the Australian Council for Educational Research indicates:

- Most learning occurs in the early years.
- The most relevant predictors of Year 12 marks during Year 9 are scores in English and Mathematics.
- The gap between the top and bottom 10% of students significantly increases and that in particular, boys significantly underachieve during Year 9.

To ensure Year 9 students are engaged and also given an opportunity to achieve in their later years of schooling, they undertake studies in Mathematics, English, Careers Education and Physical Education as core subjects. Students also get to select a wide variety of semester-based electives where they can pursue their interests within the areas of Humanities, Science, Technology, The Arts, Language, Health and Physical Education.

YEAR 9 ELECTIVES

Year 9 is the first year that students make choices about their education. We ask that you discuss your child's interests and what they would like to do over the year. Electives provide the student with an opportunity to be in charge of their educational destiny. It also provides students with a taste of thinking about their future before the far more daunting choices of Senior School pathways.

Students need to choose ONE elective from each of the coloured Domains; they can then choose their remaining electives from any of the subject blocks. Students will complete four electives each semester. It is important that students number their choices in order of priority, from 1 being the elective they most want, down to 11 being their eleventh choice. The 9th, 10th and 11th choices are in case of the elective not running or from timetable clashes. The College CANNOT guarantee that all students will get their first eight choices.



Rob Duncan
College Principal

COURSE OF STUDY OUTLINE – YEAR 9

YEAR 9 LESSONS PER WEEK			
English 5 Periods	Maths 5 Periods	Physical Education 2 Periods	Careers 1 Period
Elective 1 3 Periods	Elective 2 3 Periods	Elective 3 3 Periods	Elective 4 3 Periods

Guidelines for Course Selection

All students must select from ONE of the domain areas in addition to the core curriculum program. This means that students must choose **a minimum of one elective** from each area of **Humanities, Technology, Science and Arts domain areas to meet the requirements of Year 9 Curriculum.**

TIME-LINE AND SELECTION PROCESS

Online Application Process Starts in Year 8

TERM 2	INFORMATION
Week 2	Handbook available to all students (on College website) and emailed to all future year 9 students.
Week 3	<p>During Careers, staff explain subject selections and courses.</p> <p>Students discuss elective choices with parents/carers using the PDF Handbook on the College website.</p>
Week 4	<p>Students enter subject selections into the online system during a designated class at school.</p> <p>Students will receive a print out of their subject selections</p> <p>Students are to take this print out home and have it endorsed and signed by a parent/carer - this is an acknowledgement of the parent/carer that they endorse the selected subjects and agree to pay any fees required for the subjects selected</p>
Week 6	<p>Student signed forms are returned to school with parent authorisation for selected subjects.</p> <p>*Please note, our elective programs fill up quickly. While we do our best to ensure students are placed in their preferred electives, students who return forms after the deadline may not be able to be placed in their preferred classes.</p>
Weeks 7 - 10	Staff work to place students in their elective classes. Where there is a clash, or a reason a student cannot be placed in one of their preferred classes, a member of staff will speak with that student to arrange an alternative selection.
TERM 3	INFORMATION
Weeks 2 - 4	Electives are announced to students for 2024

YEAR 9 CORE SUBJECTS

English

This course of study aims to further extend and develop student literacy skills. Students will develop greater awareness of the way language varies according to its purpose, audience and context. Students will construct an increasingly broad range of written and spoken texts and respond critically to a variety of literature and media texts.

English as an Additional Language

This study aims to enable students to develop critical understanding and control when using Australian English in a variety of situations, ranging from the personal and informal to more public occasions. Students will be expected to communicate ideas, feelings, observations and information effectively both orally, in writing, and to a range of audiences.

This course recognises and values student diversity and encourages self-esteem by enabling students to use the English language confidently and take responsibility for their own language development. Students carry out classroom activities that integrate the skills of reading, writing, speaking, listening and thinking.



Mathematics

Mathematics develops students' skills in problem solving, practical mathematics and formal written mathematics. We aim to provide education that allows students to explore the curriculum in depth especially with key topics that are essential for future years of education. The mathematics curriculum is set up in a way that every student can achieve their personal best, where students can work at differing levels. Students have an opportunity to be placed in advanced classes, based on their scores from Year 8 in combination with teacher recommendations as well as NAPLAN scores from Year 7. Our Mathematics Curriculum has been developed in line with the current Victorian Curriculum. The aim for essential learning in Year 9 Mathematics is to develop basic and extended mathematical knowledge and skills through the study of the following dimensions:

- Number and Algebra
- Measurement and Geometry
- Statistics and Probability

Furthermore, students develop the following skills:

- Mathematical, ICT and numeracy skills that address individual student pathways.
- Application of mathematical knowledge and skills to investigate, analyse and solve practical problems through problem solving.
- Development good study habits and organisation as well as how to work in a group to achieve a common goal.



Physical Education

Students will learn and develop greater control and skill in physical activity. They will develop proficiency in a range of high-level movement and manipulative skills whilst devising and employing tactics and strategies to counter tactical challenges. Students will increase skills in planning, observation and analysis. This will allow the students to develop and evaluate ways of refining their own techniques and performance while also assisting and enhancing the performance of others.

Students will participate in peer teaching or coaching situations with a focus on skill development and improvement. Students will also learn to set personal physical activity and fitness goals, develop their own fitness program and evaluate its success.

The students will learn and use training methods to improve their fitness level and participate in sports, games, recreational and leisure activities that maintain regular participation in moderate to vigorous physical activity. During the theory component of the class (1 period per fortnight) students will investigate different components of fitness and training methods; how various body systems work as well as biomechanics and nutrition. Students will be assessed on participation, attendance, uniform, skill development, sportsmanship and the various theory components



Careers – I Focus

Students focus on the contribution that personal attributes and effective communication skills make to their future life and work roles. Students examine the changes that have taken place in the workplace over a period of time and apply their knowledge to consider the nature of change on their planning for their preferred future. In their career action plan students apply their knowledge of their personal attributes and reflect on possible future pathways taking into consideration education and training requirements and the impact of change. Students participate in activities that highlight the skills needed to gain and maintain employment such as participating in Morrisby online discovery tool and consultations, mock interviews and online applications.



YEAR 9 ELECTIVES

A variety of electives consisting of one or more courses of study (unit teams) are offered to students to ensure they have access to a range of Discipline Domains. All electives are outlined, enabling students to choose courses of study based on their interests. These elective courses of study run for a semester. Students will be required to complete 8 electives over the academic year. Availability of student courses of study choice may alter to some extent due to timetabling and student numbers. The course of study electives are based on a philosophy of authentic experiential learning where students are engaged in curriculum that develops skills and knowledge consistent with the appropriate standard levels in each Domain, within a meaningful and purposeful context.

Students **must select at least one subject** from the Arts, Technology, Humanities and Science offerings. All other electives can be selected from any of the subject offerings. If advanced Japanese is selected as an elective it must be taken over the whole year and will take up two electives (one each semester).

SUMMARY OF ELECTIVES AND ASSOCIATED COSTS

All costs are based on 2023 Contribution Schedule and are subject to change, pending School Council approval for 2024

DOMAIN	ELECTIVE	COST
English	Behind The News	\$0.00
	The Writer's Den	\$0.00
Physical Education / Health	Country to Coast	\$370.00
	Girl Power	\$20.00
	Health Industry	\$20.00
	Power Up	\$20.00
	Sports Coaching	\$20.00
	Sports Science	\$95.00
	Staying Alive	\$120.00
	Team Sports	\$20.00
Humanities	Geography - Get Out of Town!	\$30.00
	How Did This Happen? - Australian History	\$30.00
	Law 101	\$30.00
	New World Business & Entrepreneurship	\$20.00

	Where Are We Now?	\$30.00
	WWI History	\$30.00
Science	Body Systems	\$15.00
	Circuit Breaker	\$0.00
	Crime Scene Investigations	\$15.00
	Mastermind	\$0.00
	Radical Reactions	\$15.00
Technology	Creative Computing and Game-making	\$20.00
	Digital and Creative Technologies	\$20.00
	Eats and Treats	\$60.00
	Everything Building	\$25.00
	Global Grazing	\$60.00
	Product Design – Wood Technology	\$50.00
	Robotics	\$0.00
	STEM (Full year program)	\$50.00
The Arts	Actor Studio	\$30.00
	Bandzilla!	\$30.00
	Dance Evolution	\$30.00
	Digital Design	\$30.00
	Experimental Art	\$30.00
	Photography & Film	\$30.00
Language	Advanced Japanese (Full year program)	\$0.00



ENGLISH ELECTIVES

Behind The News

Have you ever wanted to learn about how the media creates news? In this elective, you will learn the skills of a journalist in the production of original news stories in the print and online formats, in depth research and developing interviews. You will learn how to script for radio and tv, print newspaper and online articles, and experience excursions in real life media settings.

Students will learn how newspapers are published, develop research skills, pitch ideas in editorial meetings and work collaboratively to publish their own newspaper. They will visit SYN radio to develop an understanding of what is involved in creating radio media, and develop their speaking skills in the creation of an online radio station. In the later part of the unit, students will visit ACMI's exhibit "The Story of the Moving Image" and learn how to use visual media to tell a story. They will then develop and publish an online news program. This unit requires a curious mind!

Approximate Cost: \$0.00

Additional excursion costs apply

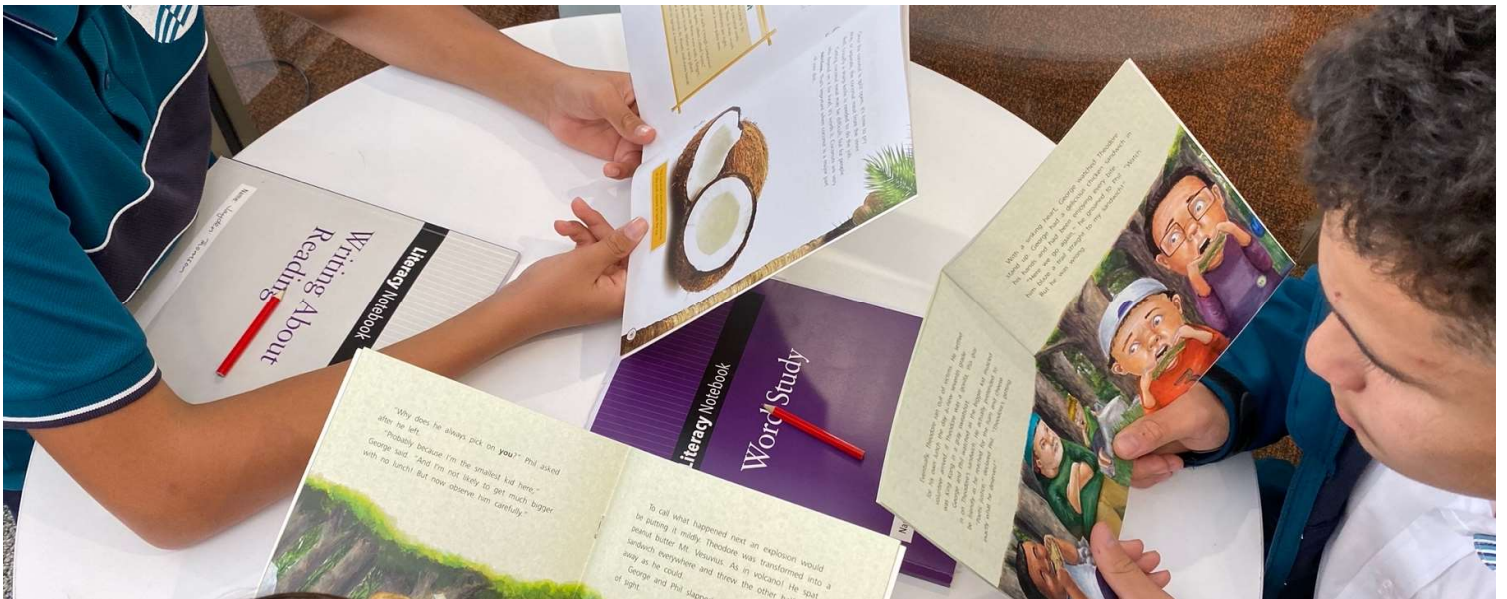
The Writer's Den

Everyone has a story to tell! What is yours? In this elective, create your own novel by expanding on your creative writing skills, developing storyboards, taking part in writer's workshops, and binding your text. The unit will start with a group of writer's workshops to develop ideas. Students will attend a Choose Your Own Adventure creative excursion, learning to focus on the reader-author relationship and learn how to use dramatic tension to create a great reader experience. After submitting a narrative plan, they will create their own mini novel.

In the second part of the unit, students will visit the State Library of Victoria writer's trail, explore the history and culture of independent publishing, and examine the different writing and illustrative styles artists and writers use to express themselves. They will create their own literary zine of short stories. This unit requires a love of stories and books.

Approximate Cost: \$0.00

Additional excursion costs apply



PHYSICAL EDUCATION / HEALTH ELECTIVES

Country to Coast

Throughout the course of this program, students will be introduced and develop their knowledge in different outdoor adventure activities. The study design is in correlation with the camps and excursions the students will be going on, and will prepare them with the correct skills to participate safely and successfully. Throughout this program the students may have the opportunity to participate in activities such as, Bush walking, camping, mountain biking, high ropes course, indoor rock climbing, orienteering, paddle boarding, as well as leadership and initiative tasks, just to name a few. This outdoor education program will allow students to plan, prepare and partake in a week-long camp led by one of the leading outdoor and adventure centres, as well as camps run by the staff at CWSC. Cranbourne West secondary college follows a strict instructor to student ratio that complies with the Education departments activity standards to ensure the safety of all students.

Approximate Cost: \$370.00

Inclusive of camps and excursions

Girls! How would you like to surround yourself with like-minded students who will encourage and inspire you to achieve your goals?

Girl Power

Girl Power is an elective open to female and non-binary students who enjoy being active and are seeking to improve their fitness, self-esteem, body image, and social skills in a positive environment. Students will have opportunities to learn how to participate in health and fitness related activities such as yoga, weights training, bootcamp, pilates, group activities, and individual challenges. Along with learning how to live an active and healthy lifestyle, students will delve into the health implications of behaviours such as sleep and stress. You will also analyse females in the media, draw inspiration from female athletes, and tackle gender stereotypes. Get ready to feel healthy, confident, and empowered through this elective!

Approximate Cost: \$20.00

Do you want to gain real-world experience in health? Have you ever wondered what 'Health' actually is? Well, we know more about health now, than in any other time in human history! But it is ever evolving. The health industry is exciting and groundbreaking, and you can be a part of it!

Health Industry

This is a valuable stepping stone in VCE Health and Human Development or for students interested in a career in the Health field. Topics covered include major causes of illness in Australia, dimensions of health, drugs and alcohol, global health, nutrition and the benefits of physical activity. Students will also get the chance to investigate the impact of nutrition on their health and participate in healthy cooking sessions to equip them with the skills and ideas to improve their own health. Students will also gain an understanding of health promotion targeting youths and implement strategies to make the Cranbourne West community healthier.

Approximate Cost: \$20.00

Additional excursion costs apply

PHYSICAL EDUCATION / HEALTH ELECTIVES CONT.

Are you ready to become a better version of yourself? Want to get stronger, run faster, or become a better athlete? Power Up will give you the platform to reach your goals.

In this subject, students will learn the fundamentals of human movement through the creation of personalised training programs. Students will examine fitness principles, dive into the muscular and skeletal system, fitness components, injury prevention and training methods to equip themselves with the tools to improve.

Power Up

Through a combination of practical and theoretical lessons, students will be given opportunities to implement their training program.

So whether you want to run 10km, get stronger, or be flexible, you will have to apply knowledge and discipline to reach your goals! Some activities include recreational exercise, strength and conditioning sessions, excursions and sports.

Approximate Cost: \$20.00

A good coach can change a game. A great coach can change a life! Are you interested in taking the next step with their sports participation and leadership? Sports Coaching is an excellent course for you.

In this subject, students will analyse various coaching methods and learn how to use them in a practical setting. They will look at the roles and responsibilities of a coach and develop practical skills of how to cater for individuals to develop their own coaching style.

Sports Coaching

Students will also look into the stages of learning, skill acquisition and what quality feedback looks like. Students will also be given opportunities to be heavily involved in coaching Year 7 and 8 Interschool Teams through planning and facilitating team training sessions.

This subject provides a necessary skill set and prepares students for future coaching, leadership and sports development roles.

Approximate Cost: \$20.00

Additional excursion costs apply



PHYSICAL EDUCATION / HEALTH ELECTIVES CONT.

Do you want to transform the sporting industry and redefine the future athletes? Apply Exercise and Sports Science to improve the performance, health and participation of individuals, athletes and teams.

Sports Science

This subject will provide an excellent pathway into the topics and content covered in Unit 1 & 2 VCE Physical Education. Students will partake in a combination of theory and practical based topics such as 'The Human Body in Motion' and Physical Activity, Sport, & Society. Whether it is analysing GPS data or delving into the concepts of human movement, you will know how to improve all levels of performance.

Appropriate for students seeking to study Physical Education pathways such as Physiotherapy, Exercise Physiology and High Performance Sport.

Approximate Cost: \$95.00

Have you ever thought about what it takes to save someone's life? Or how you would react in a life-threatening situation? This elective is here to have you geared up in all things First Aid!

This elective provides students with their First Aid Level 2 Certificate with CPR qualifications through an accredited provider. Students will obtain the knowledge and skills required to administer first aid and address scenarios such as:

- Bites and stings
- Choking
- Amputations
- Fractures
- Poisons
- Shock
- Sport safety
- Sports injuries
- Drowning
- Asthma
- Epilepsy
- Unconsciousness
- Mental health

Staying Alive

Students will be assessed based upon practical and theoretical completion of work and their participation in first aid training.

Students will also be actively involved as First Aid Officers at College events!

Approximate Cost: \$120.00

PHYSICAL EDUCATION / HEALTH ELECTIVES CONT.

Champions are made, not born!

Team Sports encompasses everything to love about sport.

Students will participate in a wide range of team sports and games with an emphasis on participation, game sense, sportsmanship and teamwork. With a mix of practical and theoretical components, students will develop tactics and strategies to catapult their team to victory. Students will be given opportunities to work in different teams on a weekly basis as they migrate their way through weekly challenges.

Team Sports

A sneak peak of the sports undertaken: Gaelic Football, Touch Rugby, Ultimate Frisbee, Basketball, Badminton, and much more!

Additional costs for excursions to sporting complexes where students will be able to talk to professionals and use state of the art sporting facilities.

Approximate Cost: \$20.00

Additional excursion costs apply



HUMANITIES ELECTIVES

Get Out of Town! - Geography

In 'Get out of Town!' students will be looking at Melbourne, and other cities around the world, in terms of liveability and sustainability. The unit will also help students to engage with their local community through active fieldwork. For Interconnections, students gain an insight into how people are connected to places around the world through tourism. Students will continue to develop their geography skills along with their research and writing abilities.

Approximate Cost: \$30.00
Inclusive of excursions

How Did This Happen? - Australian History

Have you ever wondered how Australia ended up this way? Or why there are so many movements now on seemingly basic rights? In this unit, we are going to go back to where it all started to change. From what really happened when Captain Cook arrived, to famous figures like Ned Kelly, and world events like the Gold Rush. We examine the inequality experienced amongst Indigenous Australians from past all the way to present, and analyse how the civil rights movements in America inspired Australian's to do the same. We will also go to the Old Melbourne Gaol to witness firsthand how life could be like for Australians, their prison systems and even their courts of law. We will cover it all and more!

Approximate Cost: \$30.00
Inclusive of excursions

Law 101

Are you passionate about human rights and issues affecting our world? Do you want to learn real life skills about how to handle a legal problem? Have you ever thought about working in law? The Law 101 elective will teach you exactly this, you need to know about your human rights and the laws that affect you right here in Victoria. Throughout the unit, you will be able to debate with your peers, participate in a mock trial, create your own political protest, and observe real life court cases and educational law games.

Approximate Cost: \$30.00

New World Business & Entrepreneurship

Are you someone with a business brain? Do you think you have a business idea that could turn \$20 into \$100? Well, prove it! Do you have an interest in Crypto and the economy, but don't know how it works? Sign up for New World Business & Entrepreneurship to learn about how business is conducted today.

Approximate Cost: \$20.00

HUMANITIES ELECTIVES CONT.

Where Are We Now?

Are you interested in the constant changes happening in this world? Do you feel like you want to make a difference, but don't know where to start? This unit will be for you! We are going to explore how our world has changed overtime, and where exactly we fit into this problem, including exploration of climate change, carbon footprints, and where we should be looking to better our planet. We will also look into the effects our changing world is having on natural disasters, our endangered populations, and have the chance to learn how we can make our actions count by going to the experts themselves.

Approximate Cost: \$30.00
Inclusive of excursions

WWI History

Students will analyse the political climate of the early 20th Century and will examine the various causes of the first World War. Students will identify and analyse the significant events of the war, the nature of 20th century warfare and the impacts on the societies involved. There will be a particular emphasis on the perspectives and experiences of Australians, both at the front and at home. Students will complete a research task focused on examining the end of the war along with the long-term effects of the war on global relations in the interwar period.

Approximate Cost: \$30.00
Inclusive of excursions



SCIENCE ELECTIVES

How do your organs work together to keep you alive? How does your immune system fight infections? This elective - Body Systems - will dive into the remarkable world of Biology.

Body Systems

Students will learn about the fascinating biological machine that is the human body. They will discover that each body system works in an interrelated way to contribute to the health of the entire organism. They will learn about homeostasis being the processes living things use to maintain a stable internal environment, in spite of external changes. Students will focus on the role of feedback systems in the human body that detects and respond to change, including the damage made by invading pathogens and the body's ability to defend itself against that damage. They will also discover the brain's role in the regulation of hormones within the endocrine system and the critical link between the nervous and endocrine systems.

Approximate Cost: \$15.00

Additional excursion costs apply

Every day we turn on a light, charge our phone, cook our dinner, drive to school or work. But have you ever considered that it is electricity that makes all these things possible? But what is electricity, and how does it work? This elective - Circuit-Breaker- will investigate the electrifying world of Physics.

Circuit Breaker

Students will learn how the flow of the humble electron has led to the incredible technological advances and quality of life most of us take for granted. They will gain an understanding of fundamental electrical and electromagnetic properties, while learning hands-on practical skills using electrical equipment, creating a range of electrical circuits, and building a loudspeaker and basic motor. Circuit-Breaker will take students on an adventure through the world of electrical circuits into the mysterious realm of electromagnetism, all the while completing a number of group-based practical tasks.

Approximate Cost: \$0.00

Additional excursion costs apply



SCIENCE ELECTIVES CONT.

Crime Scene Investigations

If there is no body and no gun at a crime scene, what evidence remains to give clues about what happened? What information can be found on a bullet? This elective - Crime Scene Investigations - will examine various aspects of Forensic Science.

Students will examine the practical and theoretical science behind crime scene protocol, evidence collection, human identification and evidence analysis. They will cover a range of techniques which include observations and attention/perception; forensic investigation technologies and processes; blood-type analysis; microscopy; hair and fibre analysis; fingerprint analysis; handwriting; chemical analysis; DNA extraction and profiling. They will apply these skills and problem-solving skills to criminal case studies, they will gain in depth knowledge of how these techniques are used by forensic scientists to collect and analyse data from a crime scene, and then further used to determine the sequence, motives and context of events, narrow down suspects and ultimately solve crimes.

Approximate Cost: \$15.00

Additional excursion costs apply

Master Mind

Have you ever wondered what causes a psychopath to act the way they do? Or why a seemingly ordinary person may suddenly join a cult? Or more about mental illnesses and how they affect people? This elective – Master Mind – will delve into the most fascinating parts of Psychology.

Students will learn about what intelligence is and how it is measured. They will explore Gardner's theory of multiple intelligences and design activities to target particular intelligence types. Students will go on an excursion to Amaze N Things to consolidate their understanding of intelligence types.

They will then look at mental health and mental illnesses, an important topic in society. Causes and treatments of psychological disorders will be discussed, and students will choose a psychological disorder to research further.

In the second half of this elective, students will learn about personality types and traits. They will research a famous psychopath and explore how their personality traits shaped their behaviour.

Finally, students will study the key characteristics of cults. By exploring interesting historical experiments in social psychology, students will form an understanding of why people choose to join cults. They will then have a go at designing their own cult.

This unit will explore many interesting topics and develop skills that are important for VCE Psychology.

Approximate Cost: \$0.00

Additional excursion costs apply

SCIENCE ELECTIVES CONT.

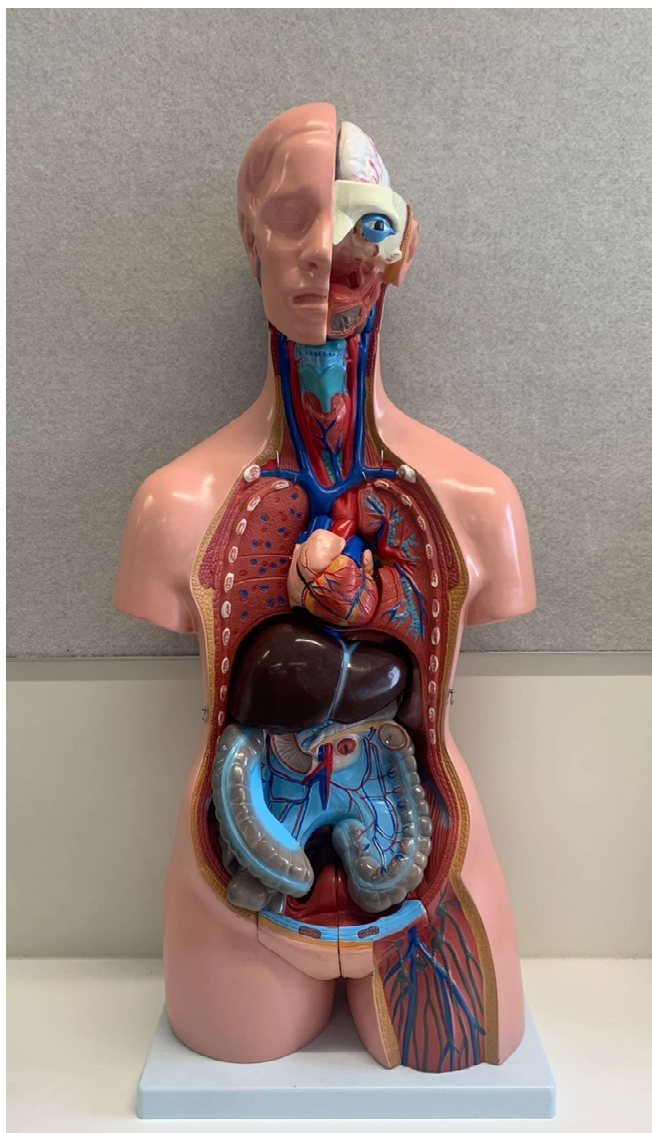
What makes something explosive? Why are some reactions fast and others slow? This elective - Radical Reactions - will explore the exciting world of Chemistry.

Radical Reactions

Students will learn all about atoms and chemical reactions. They will learn that atoms are made of very small subatomic particles called protons, neutrons and electrons. They will gain an understanding of what a chemical reaction is and the basics of how to write a chemical equation. They will investigate the law of conservation of mass and how this applies to chemical equations. Students will also examine the role of energy in everyday chemical reactions to classify reactions as exothermic or endothermic. They will conduct their own investigations into chemical reactions which include: designing an experiment, constructing suitable hypotheses, collecting and analysing data and they will consider the reliability of their experiment and their results.

Approximate Cost: \$15.00

Additional excursion costs apply



TECHNOLOGY ELECTIVES

Creative Computing and Game Making

Like gaming? Want to learn about how your favourite games are made and created? In this elective you will learn about game design, game creation and logical computational thinking. Students will design a game for a chosen audience, ensuring that constraints and requirements of the chosen audience are met. Students will learn basic and moderate level coding techniques whilst using various game making software to design and create their own game.

Approximate Cost: \$20.00

Digital and Creative Technologies

Students will use a range of creative and digital analysis tools to manipulate and modify data. They will use tools such as video editing software, spreadsheet software, image editing software, and gain skills in using computers in a creative work environment. We will investigate new technologies and how they impact our lives, including crypto currencies, coding, cyber security and self driving cars.

Approximate Cost: \$20.00

Eats and Treats

Students will be able to develop their love of cooking (and eating) as they create a wide range of baked goods. This will incorporate both sweet and savoury recipes such as biscuits, cakes, pastries and bread making which they can adapt to their personal tastes and dietary requirements. They will investigate, design, produce and evaluate food through both written and practical tasks. Students are encouraged to experiment with different cooking methods, food types and flavours.

Approximate Cost: \$60.00

Everything Building!

This is a hands-on elective which helps you gain skills covering a wide range of trades. In this elective students have the opportunity to undertake projects, indoors and outdoors in a team environment. If you have thought about being a tradesperson post-schooling, this is a great introduction into Landscaping, Carpentry, Concreting and plumbing.

Approximate Cost: \$25.00

Global Grazing

The emphasis in this subject is on increasing awareness of ingredients and the methods of cookery used to produce international dishes. We will be travelling the world and cooking from the countries we visit such as Italy, China, Japan, France, Thailand, Mexico and Morocco. Students will gain an appreciation of different food cultures and an understanding of the factors which influence food choices. They will investigate, design, produce and evaluate food through both written and practical tasks. Students will enjoy experiencing the cultural diversity from kitchens around the world.

Approximate Cost: \$60.00

TECHNOLOGY ELECTIVES CONT.

Product Design

Students in this class will gain advanced skills and knowledge of Product Design including furniture construction using hardwood timbers. Students will manufacture core pieces of work to understand different manufacturing techniques, processes and procedures. Students will focus on refining hardwood timber to produce an end product. Taking home a finished product is also an important component of this elective.

Approximate Cost: \$50.00

Robotics

Gain a basic understanding of electronics and robotics through hands-on learning, electrical theory and fundamental electro-technology skills. Students will learn how basic electronics control the functions of a simple robot, circuit symbols and diagrams, electronics theory and elementary electronics assembly.

Approximate Cost: \$0.00

STEM (Year long elective)

This elective is a yearly elective where students will participate in the Energy breakthrough challenge. The Energy Breakthrough has provided opportunities for students, teachers, parents and local industry to work together to design and construct a vehicle, a machine or innovation in technology that will represent an 'energy breakthrough'. The program is unique in that all teams must compete across three areas of assessment: Design and Construction, Display and Presentation and Trials. The program encourages participants to examine and use the latest technology while considering its impact on the environment and the way people live locally and globally. It requires a team effort and an across-the-curriculum approach. These groups then bring their vehicles and machines to Maryborough in Victoria for a huge celebration in which they can demonstrate and trial them in action.

Approximate Cost: \$50.00



THE ARTS ELECTIVES

“The word theatre comes from the Greeks. It means the seeing place. It is the place people come to see the truth about life and the social situation.”

Stella Adler

The Year 9 program encourages the progressive development of skills and an understanding of theatre and performance. If you want to develop your imagination, creativity and collaborative performance skills and can be focused and committed; then this elective is for you.

Areas of study include:

Actor Studio

- Voice and Movement skills
- Improvisation
- Elements of Drama
- Characterisation
- Actor-audience relationships
- Scripted Drama: Scene work
- Critical analysis: Theatre Review
- Performance spaces and the conventions of theatre
- Elements of Production e.g. costume, set, lighting, etc

Approximate Cost: 40.00

Inclusive of excursions

Bandzilla!

In “Bandzilla!” students will develop both theoretical knowledge & practical skills on an instrument (or multiple!) of their choice through forming bands/ensembles & rehearsing a wide range of different repertoire. Students will explore the uses of modern music technologies such as recording techniques and DJ performance and how it can support their bands/ensembles in a modern setting. This will culminate in an end of semester collaborative showcase performance with the ‘Dance Evolution’ & ‘Actor’s Studio’ Year 9 classes.

Approximate Cost: \$40.00

Inclusive of excursions

Dance Evolution

In Dance Evolution students will explore a broad range of dance styles throughout the semester including; contemporary, hip hop, ballet and jazz. Classes will involve a variety of workshops and fun dance based activities where students will explore the various genres of dance through both composition and performance. Students will have the opportunity to showcase their best works in the End of Semester Showcase, along with those in music and drama.

Approximate Cost: \$40.00

Inclusive of excursions

THE ARTS ELECTIVES CONT.

Digital Design

In this elective, students will learn how to use iPad apps such as Procreate, Sketchbook and Photoshop to create a portfolio of digital designs. Students will learn about different types of design and develop the ability to create logos, packaging designs, character designs, architecture, interior design and product design. Throughout the elective, students will learn about how designers work and follow the same design process that is used in the creative industry. This hands on subject will develop your digital drawing skills and is ideal for students who want to pursue digital art and visual communication design. Throughout the semester, students will develop an ability to reflect upon the designs of others and be able to discuss different factors that influence designs. At the completion of the semester, students will have learnt about designers, gained an appreciation of design and have the opportunity to display their digital designs at the end of year exhibition.

Approximate Cost: \$40.00

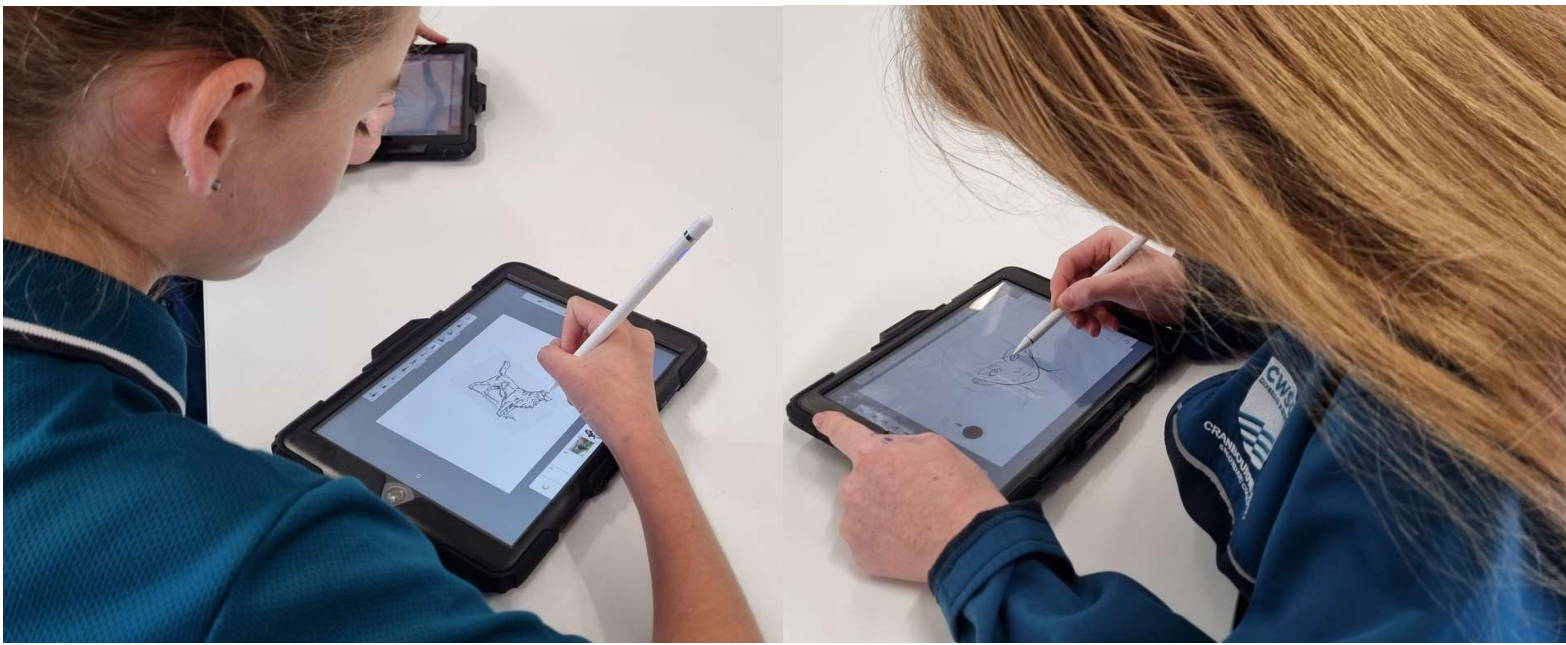
Inclusive of excursions

Experimental Art

In this elective, you will be encouraged to explore the creative process of making 2D and 3D art using unusual and different techniques. The aim of this elective is to create contemporary artwork that pushes the boundaries of art making, giving you the confidence to express yourself creatively. You will learn about painting, sculpture, mixed media, printmaking and develop your drawing skills throughout the semester. You will also learn about how artists explore conceptual themes in their artwork and create practical responses to their stylistic techniques. At completion of the semester, you will have created a sketchbook of artworks and have the opportunity to display your artwork in the end of year exhibition.

Approximate Cost: \$40.00

Inclusive of excursions

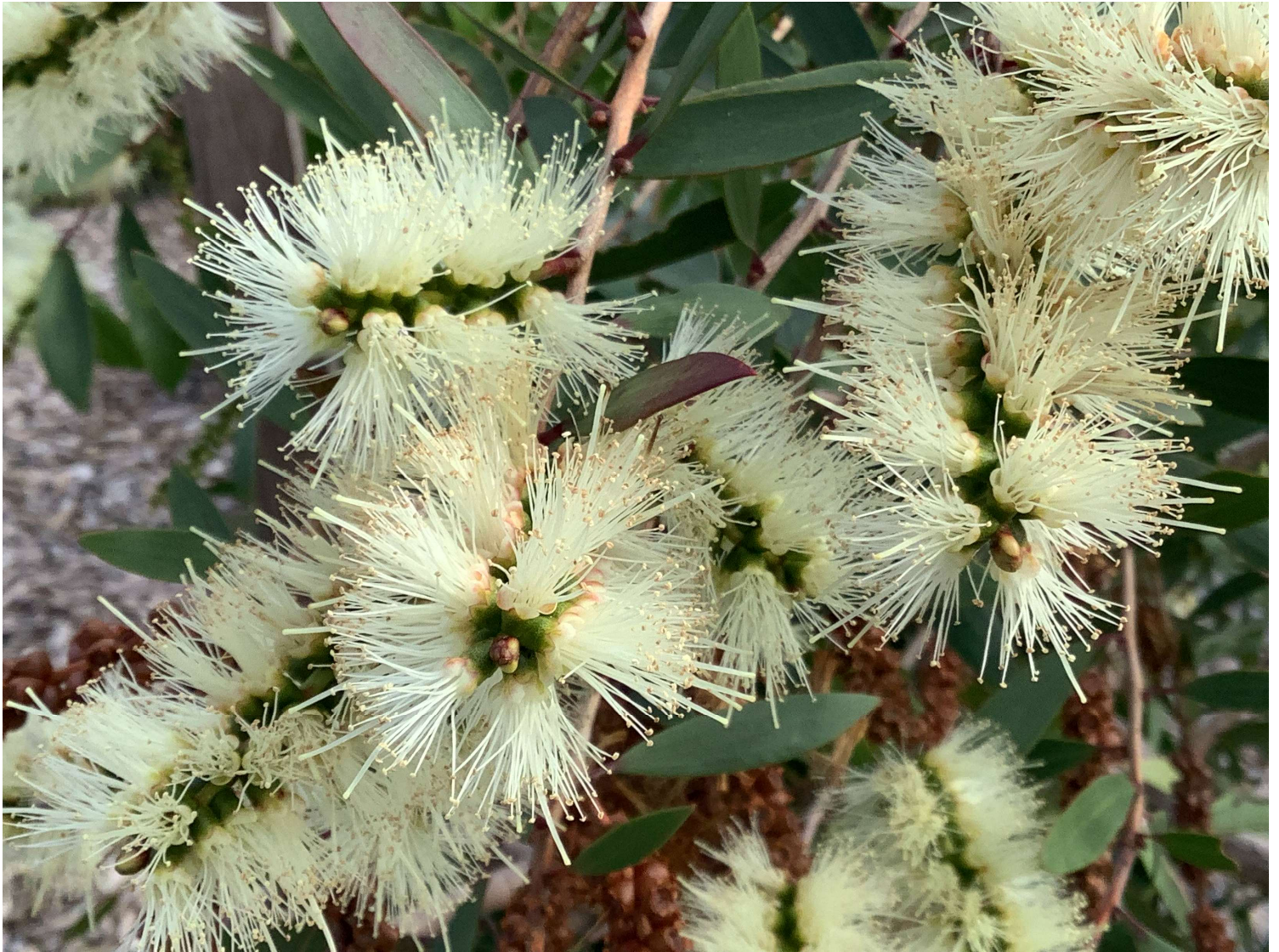


THE ARTS ELECTIVES CONT.

Photography and Film

In this elective, you will learn how to create photographs and short films high quality digital cameras and editing software. Throughout the elective, you will learn media production skills including image manipulation, audio and video editing. After learning how to manually use a camera, you will develop a folio of photographs that demonstrate an understanding of the elements of photography and learn about photography composition. By looking at the media artworks of others, you will also develop an appreciation of media artworks and learn how to discuss different themes and genres within photography and film. In this elective, you will visit the ACMI gallery and participate in a workshop where you will learn how to create cinemagraphs. At the completion of the semester, you will have created a portfolio of photographs and be able to showcase your short film to an audience.

Approximate Cost: \$40.00
Inclusive of excursions



LANGUAGE ELECTIVES

Advanced Japanese

Students participating in this full-year Japanese Culture elective will focus on some of the various aspects of Japanese society which fascinates everybody around the world. While completing a range of hands-on activities, the aim is for students to gain a detailed understanding of another culture's perspective of why and how things are done in a certain way. This often involves ancient traditions yet also modern interpretations. Students will plan and write their own graphic novel (in English) and pictures can be either drawn by hand or digitally. They will also be designing and decorating their own skateboard deck (only the deck – no wheels) as well as their own personalised T-shirt. This elective is only limited by your imagination while you gain further insight into the social values embedded within Japanese culture.

This elective is only suitable for those students wishing to undertake Japanese in Year 10 and the VCE. Students will continue to develop skills in speaking, listening and writing the Japanese language.

Approximate Cost: \$0.00



PRINTABLE SELECTION SHEET

Students can print this sheet, complete it and bring it to class to help them submit their elective selections online.

All costs are based on 2023 Contribution Schedule and are subject to change, pending School Council approval for 2024

ELECTIVE	COST	PREFERENCE
English		
Behind The News	\$0.00	
The Writer's Den	\$0.00	
Physical Education / Health		
Country to Coast	\$370.00	
Girl Power	\$20.00	
Health Industry	\$20.00	
Power Up	\$20.00	
Sports Coaching	\$20.00	
Sports Science	\$95.00	
Staying Alive	\$120.00	
Team Sports	\$20.00	
Humanities		
Geography - Get Out of Town!	\$30.00	
How Did This Happen? - Australian History	\$30.00	
Law 101	\$30.00	
New World Business & Entrepreneurship	\$20.00	
Where Are We Now?	\$30.00	
WWI History	\$30.00	
Science		
Body Systems	\$15.00	
Circuit Breaker	\$0.00	
Crime Scene Investigations	\$15.00	
Mastermind	\$0.00	
Radical Reactions	\$15.00	

Technology		
Creative Computing and Game-making	\$20.00	
Digital and Creative Technologies	\$20.00	
Eats and Treats	\$60.00	
Everything Building	\$25.00	
Global Grazing	\$60.00	
Product Design - Wood Technology	\$50.00	
Robotics	\$0.00	
STEM (Full year program)	\$50.00	
The Arts		
Actor Studio	\$40.00	
Bandzilla!	\$40.00	
Dance Evolution	\$40.00	
Digital Design	\$40.00	
Experimental Art	\$40.00	
Photography & Film	\$40.00	
Language		
Advanced Japanese (Full year program)	\$0.00	